



**THOMPSON**  
BRAD THOMPSON HOMES

# House Design Profile



[www.bradthompsonhomes.com.au](http://www.bradthompsonhomes.com.au)



**THOMPSON**  
BRAD THOMPSON HOMES



# THOMPSON

BRAD THOMPSON HOMES

Welcome to Brad Thompson Homes

Building the home of your dreams may be one of the most significant and rewarding things you will ever do. I believe the only way to be a partner in that process is to exceed your expectations. Because of our uncompromising commitment to quality, Brad Thompson Homes is one of the most respected, luxury custom home builders in South East Queensland.

Our reputation has been built by creating client relationships that are based on active listening and design recommendations. In this way, we're able to capture every nuance of your vision and address each need and concern. Our client-centred process ensures that the elegant seafront or rainforest home we create for you is as exceptional as you have envisioned.

I invite you to spend time in the Testimonials and Portfolio sections of our website where you'll find photos of our most recent projects and responses from our clients.

We look forward to partnering with you in the creation of an extraordinary home for you and your family. You have my personal seal of approval that your building experience with Brad Thompson Homes will be nothing short of perfect.

Kindest regards,

A handwritten signature in grey ink that reads 'Brad Thompson'.

**Brad Thompson**

DIRECTOR





# THE BRAD THOMPSON HOMES DIFFERENCE

## Our Company

- Sunshine Coast family run and operated business
- Professional and experienced staff specialising in their relevant fields
- Vast experience in unique and challenging home construction and design

## The Management Team

- Luxury building division in-house providing specialised building advice
- Full time Workplace Health and Safety Officer
- Internal quality control Management systems
- Quality management system with SAI Global
- PQC level 3 rating with State Government
- Internal building specialists in carpentry and plastering
- Tradesman and Suppliers are registered with relevant bodies
- High quality building material knowledge for the installation and use of cutting edge materials
- Integrated Thompson Building Group systems ensure a successful construction process

## It's Your Home Build

- Fixed price HIA building contract which ensures no surprises
- We implement specialised needs of our Client into their home design
- Client and architect interaction from concept to handover
- We encourage regular site meetings with Client, Management and Designers

## Technology

- Security coded Intranet system
- Mobile phone application for all parties involved in the construction process
- Project Server program used to document and detail the build process
- Web cams are used on Brad Thompson Homes building sites for live viewing by clients

# BT.

## MINYAMA HOME



### FACTS

Location

Minyama, Sunshine Coast

Design

Custom Brad Thompson Homes Design

House Area

508m<sup>2</sup>

Bedrooms

Four

Bathrooms

Three plus Ensuite to Master Bedroom

Garage

Three cars

Features

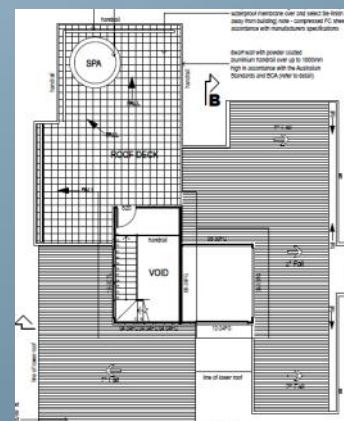
Gymnasium, Media Room, Rumpus Room,  
Roof Terrace, Smart Wiring, Water Features



Lower Level



Upper Level



Roof Terrace

[www.bradthompsonhomes.com.au](http://www.bradthompsonhomes.com.au)



**THOMPSON**  
BRAD THOMPSON HOMES



# PELICAN WATERS HOME



## FACTS

Location

Pelican Waters, Sunshine Coast

Design

Custom Brad Thompson Homes Design

House Area

675m<sup>2</sup>

Bedrooms

Five

Bathrooms

Three plus Ensuite to Master Bedroom

Garage

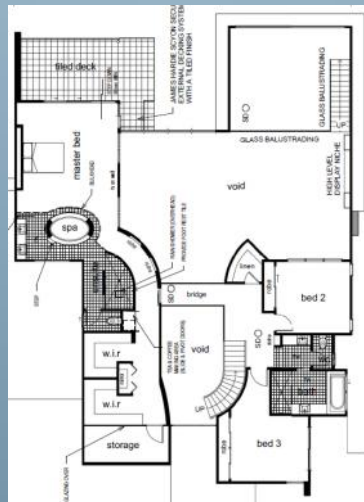
Four cars

Features

Wine Cellar, Sauna, Pool, Spa, Media Room



Lower Level



Upper Level

[www.bradthompsonhomes.com.au](http://www.bradthompsonhomes.com.au)



**THOMPSON**  
BRAD THOMPSON HOMES





# WELLINGTON POINT HOME



## FACTS

Location

Wellington Point, Brisbane

Design

Custom Brad Thompson Homes Design

House Area

568m<sup>2</sup>

Bedrooms

Four

Bathrooms

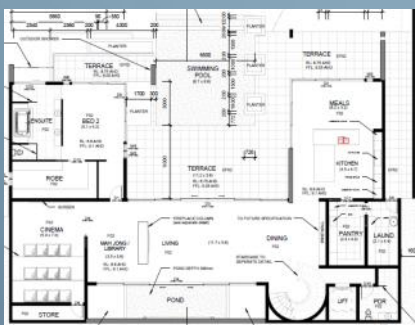
Four plus Ensuite to Master Bedroom

Garage

Three cars

Features

Lift, Pool, Cinema, Gymnasium, Study



Lower Level



Upper Level

[www.bradthompsonhomes.com.au](http://www.bradthompsonhomes.com.au)



**THOMPSON**  
BRAD THOMPSON HOMES



# NOOSA WATERS HOME



## FACTS

Location

Noosa Waters, Sunshine Coast

Design

Custom Brad Thompson Homes Design

House Area

540m<sup>2</sup>

Bedrooms

Four

Bathrooms

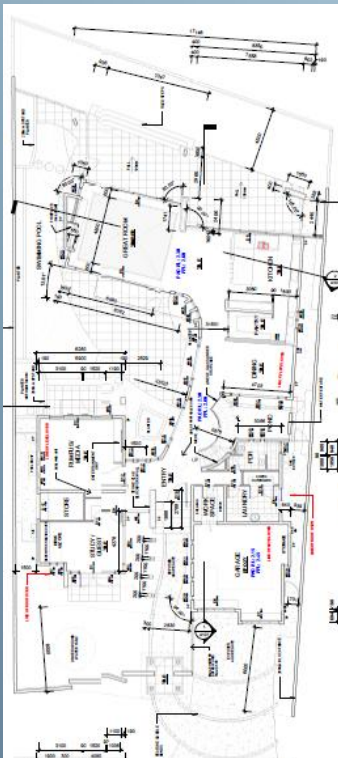
Two plus Ensuite to Master Bedroom

Garage

Two cars

Features

Pool, Media Room, Great Room



Lower Level



Upper Level



[www.bradthompsonhomes.com.au](http://www.bradthompsonhomes.com.au)



**THOMPSON**  
BRAD THOMPSON HOMES

# BT.

## BRISBANE RIVER HOME



### FACTS

Location

Sinnamon Park, Brisbane

Design

Custom Brad Thompson Homes Design

House Area

804m<sup>2</sup>

Bedrooms

Four

Bathrooms

Four plus Ensuite to Master Bedroom

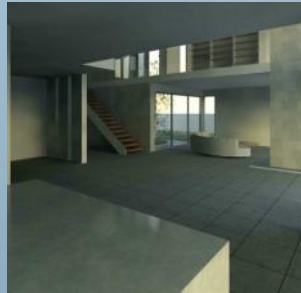
Garage

Five cars

Features

Media Room, Study, Meditation Room,

Children's Retreat



Lower Level



Upper Level



Basement

[www.bradthompsonhomes.com.au](http://www.bradthompsonhomes.com.au)



**THOMPSON**  
BRAD THOMPSON HOMES



# MOOLOOLABA CANAL HOME



## FACTS

Location

Mooloolaba, Sunshine Coast

Design

Custom Brad Thompson Homes Design

House Area

455m<sup>2</sup>

Bedrooms

Five

Bathrooms

Two plus Ensuite to Master Bedroom

Garage

Two cars

Features

Media Room, Rumpus Room, Pool



Lower Level



Upper Level



[www.bradthompsonhomes.com.au](http://www.bradthompsonhomes.com.au)



**THOMPSON**  
BRAD THOMPSON HOMES

# BT.

## CARINA HEIGHTS HOME



### FACTS

Location

Carina Heights

Design

Custom Brad Thompson Homes Design

House Area

721m<sup>2</sup>

Bedrooms

Five

Bathrooms

Four plus Ensuite to Master Bedroom

Garage

Four cars

Features

Media Room, Office, Pool Terrace, Rumpus

Room, Workshop, Outdoor Entertainment Area



Lower Level



Upper Level

[www.bradthompsonhomes.com.au](http://www.bradthompsonhomes.com.au)



**THOMPSON**  
BRAD THOMPSON HOMES

BT.

# BUDERIM HOME

FACTS

Location

Buderim, Sunshine Coast

Design

Custom Brad Thompson Homes Design



[www.bradthompsonhomes.com.au](http://www.bradthompsonhomes.com.au)



**THOMPSON**  
BRAD THOMPSON HOMES



# SMALL ACREAGE HOME



## FACTS

Location

Bridgeman Downs

Design

Custom Brad Thompson Homes Design

House Area

880m<sup>2</sup>

Bedrooms

Five

Bathrooms

Five plus Ensuite to Master Bedroom

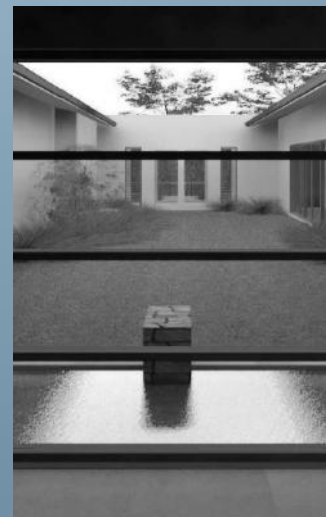
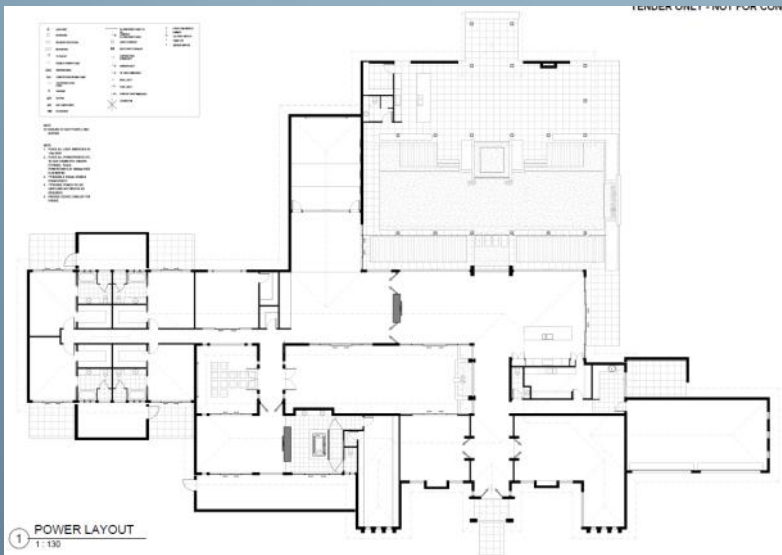
Garage

Four cars

Features

Games Room, Cinema, Entertainment

Pavilion, Pool, Spa, Scullery



Ground Level



# BRIBIE ISLAND HOME



## FACTS

Location

Bribie Island

Design

Custom Brad Thompson Homes Design

House Area

411m<sup>2</sup>

Bedrooms

Four

Bathrooms

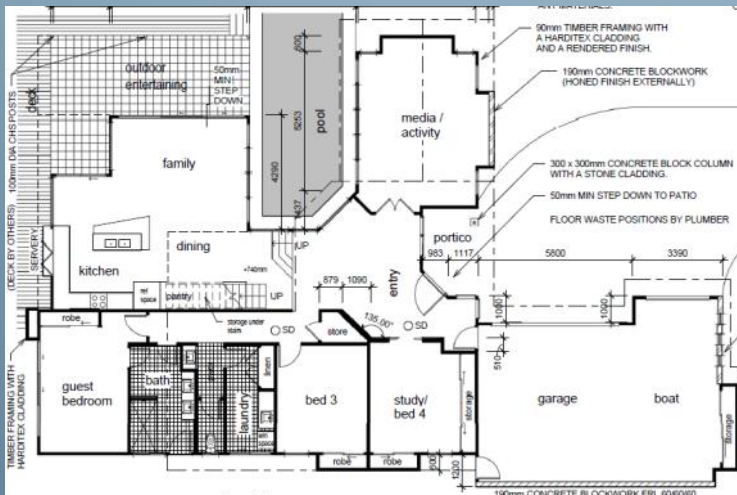
One plus Ensuite to Master Bedroom

Garage

Three cars

Features

Pool, Media Room, Retreat



Lower Level



Upper Level

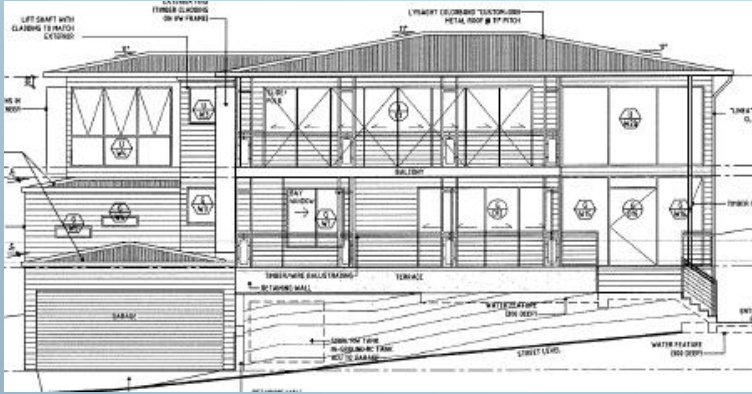
[www.bradthompsonhomes.com.au](http://www.bradthompsonhomes.com.au)



**THOMPSON**  
BRAD THOMPSON HOMES

# BT.

## HAMILTON HOME



### FACTS

Location

Hamilton, Brisbane

Design

Custom Brad Thompson Homes Design

Bedrooms

Five

Bathrooms

Three plus Ensuite to Master Bedroom

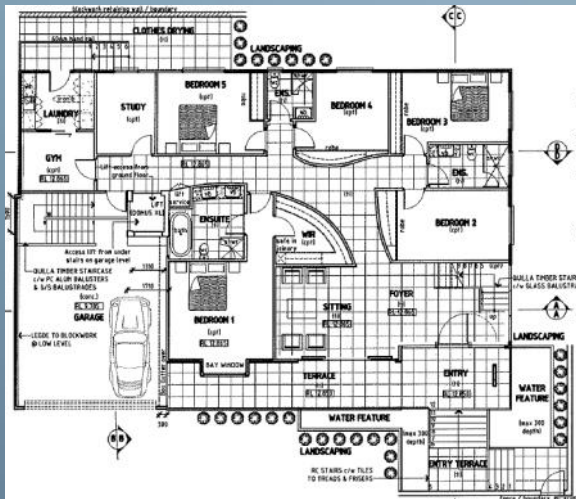
Garage

Two cars

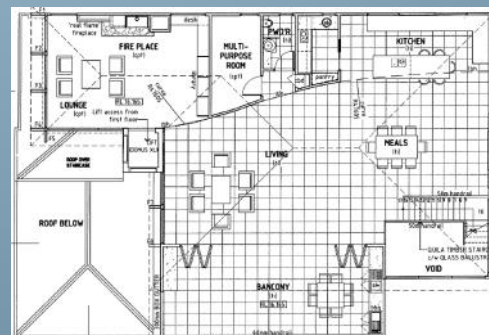
Features

Study, Gymnasium, Lift, Media Room,

Balcony off main living area



Lower Level



Upper Level

[www.bradthompsonhomes.com.au](http://www.bradthompsonhomes.com.au)



**THOMPSON**  
BRAD THOMPSON HOMES